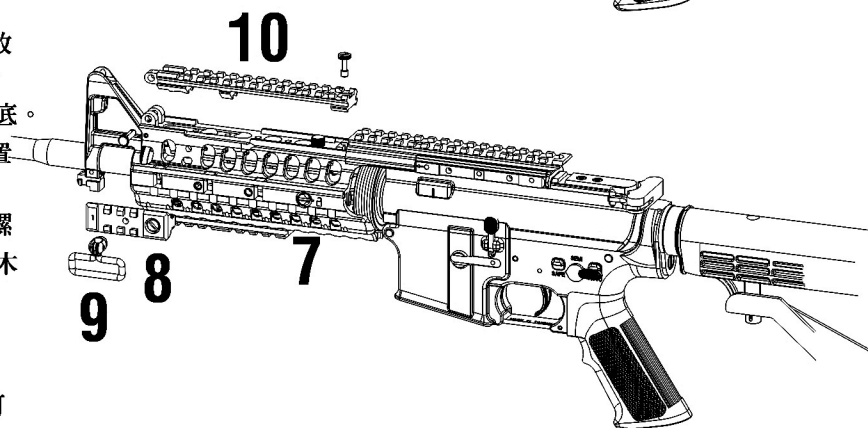
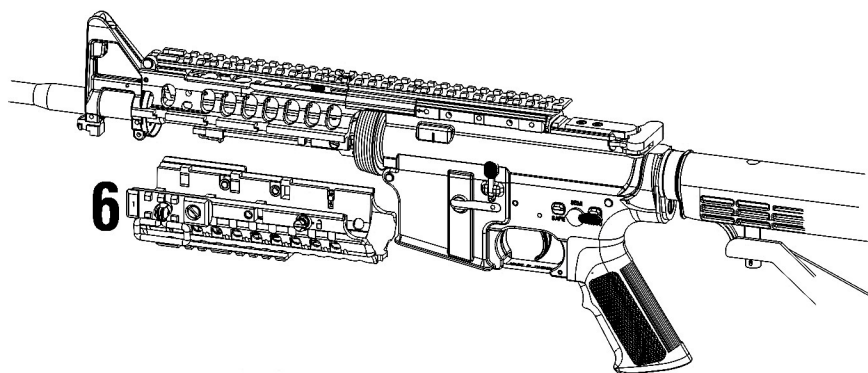
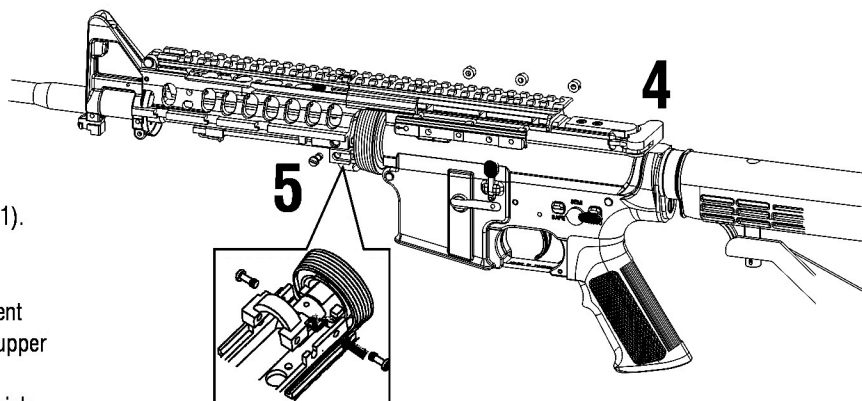
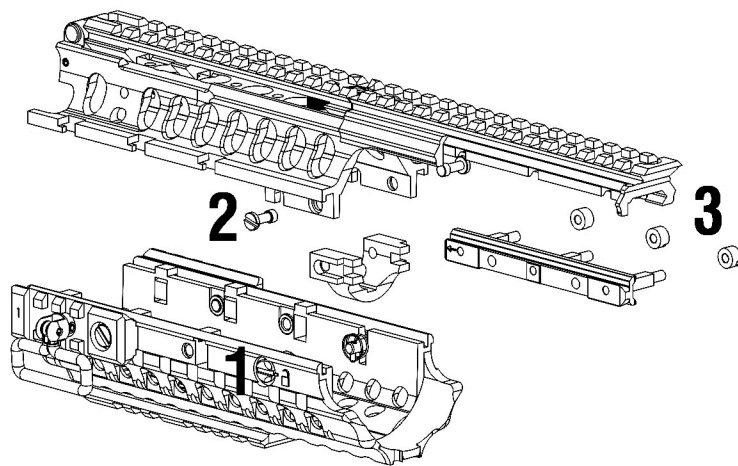


# CS4 SIR戰術護木組

## CS4 SIR Tactical Handguard

MA-12

1. Release the two rear spring loaded lock buttons and any other securing screws on other attachments, then the lock buttons will "pop out" that the lower S.I.R. section is released.
2. Unscrew the two delta ring screws and remove the lower portion of the delta ring
3. Unscrew each of the three nuts securing the flat-top receiver anchor anchor and remove the three cross bars to unlock the anchor from the main S.I.R. body.
4. With the cross bar anchors that attaches the S.I.R. to the flat-top receiver removed, insert the upper S.I.R. into position from the front (muzzle-end) until it stops and the cross notches on the flat-top receiver are aligned.  
With the S.I.R. upper in position, re-insert the three cross bars removed in step #3 through the cross notches the upper S.I.R. to the flat-top. with the threaded ends of each crossbar protruding through the opposite side, screw each one of the nuts back onto the rods and secure the S.I.R. to the flat-top receiver.
5. Reposition the delta ring and secure it around the barrel by re-inserting the screws removed in step #2.
6. Secure the lower section of the S.I.R. by inserting forward into the front sight post and then pulling the lower portion backward into the locking position.
7. Re-engage the spring loaded lock buttons and lock in a vertical position each side of lower hand guard (reverse step #1).
8. To install a desired rail or accessory onto the S.I.R. slide the hand guard forward and place studs into the rail.
9. The multi-position sling swivel can be relocated via replacement into any of the multiple threaded holes contained in the S.I.R. upper and lower rails.
10. Forward rail section of upper S.I.R. is a dual interface unit which can be unlocked and reversed to accept an ICS AN/PEQ-2 laser/battery unit.



1. 先將下護木固定鈕旋轉至開啓位置，讓固定鈕彈出，再將下護木往後推到底，向下拉取出下護木。
2. 將護木固定環螺絲鬆開後即可取出護木固定環。
3. 將上護木固定螺帽鬆開取下，再取出上護木固定條。
4. 將上護木後端右側先與槍機匣軌道對齊，並將溝槽卡進軌道，再將上護木與槍機匣軌道對齊，順著軌道將上護木推到底，再將軌道條固定孔對齊槍機匣軌道凹槽，對齊後插入固定條，再將上護木固定螺帽鎖緊。
5. 翻轉槍身，將上護木固定環溝槽，對準槍管兩側凸起放入上護木，推到底將孔位對齊，鎖上固定環螺絲固定。
6. 將下護木兩側滑槽，插入上護木兩側滑動，再往前推到底。
7. 將下護木兩側後端護木固定鈕，壓到底旋轉至鎖定位置，即可將下護木固定。
8. 下護木快速拆換式軌道條，只要鬆開鎖附螺絲至鎖附螺絲自動彈起，即可拆下軌道，快拆式軌道可安裝於下護木左右兩側及下方，並且可以依需求調換位置。
9. 快拆式背帶環搭配快拆式軌道，可輕鬆達到快速變換的功能。
10. 將上護木軌道螺絲鬆開取下，再將前方插銷拉開，即可將上方軌道反轉，再依序裝回上護木即可安裝PEQ-2。